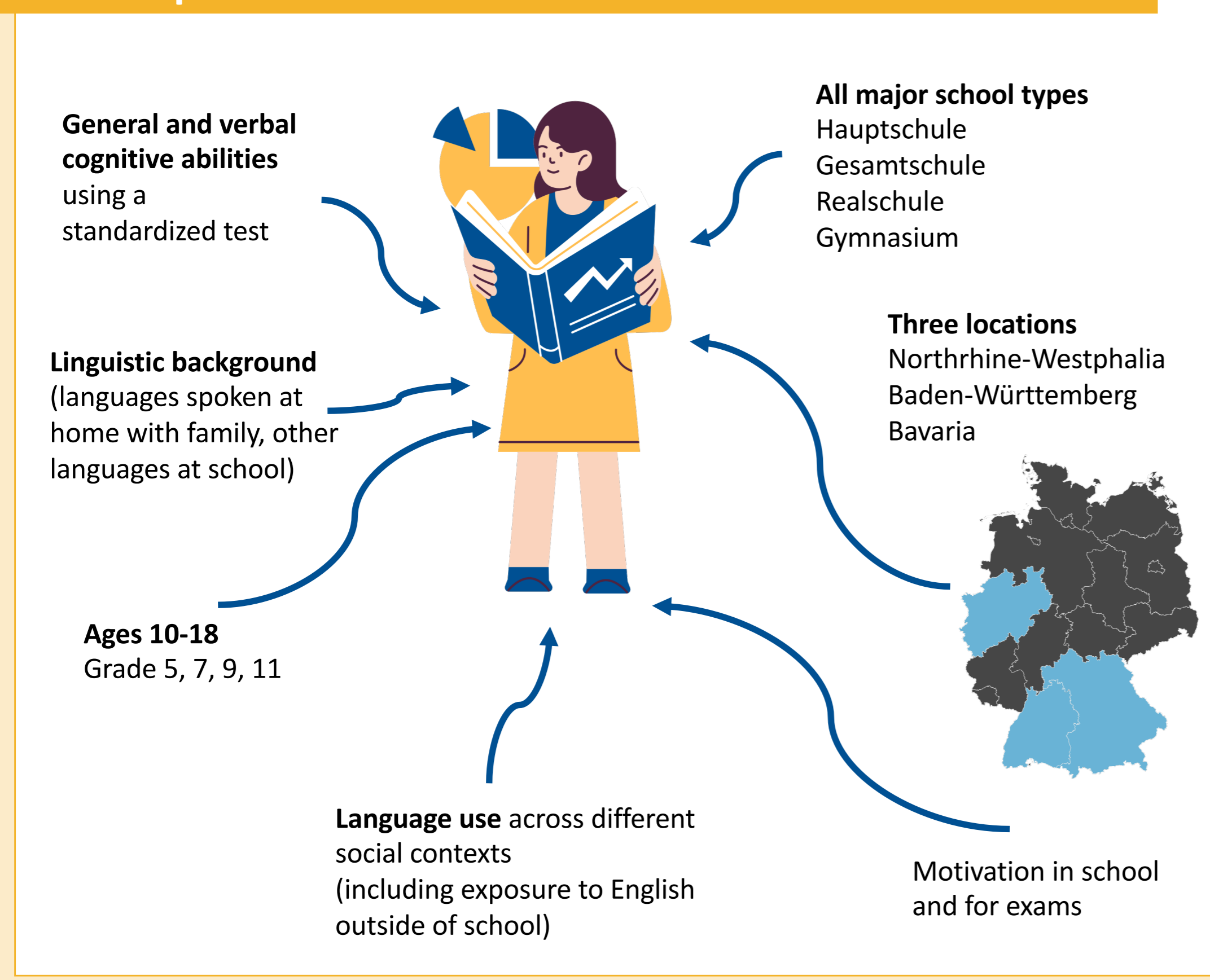


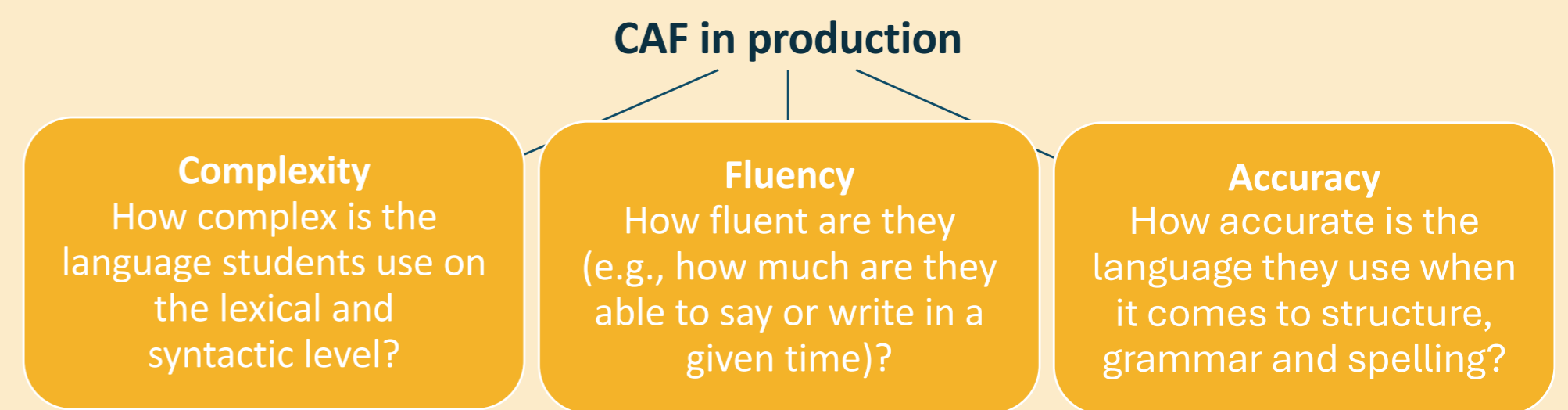
Exploring Learners of English

Young German Learner English (YGLE)

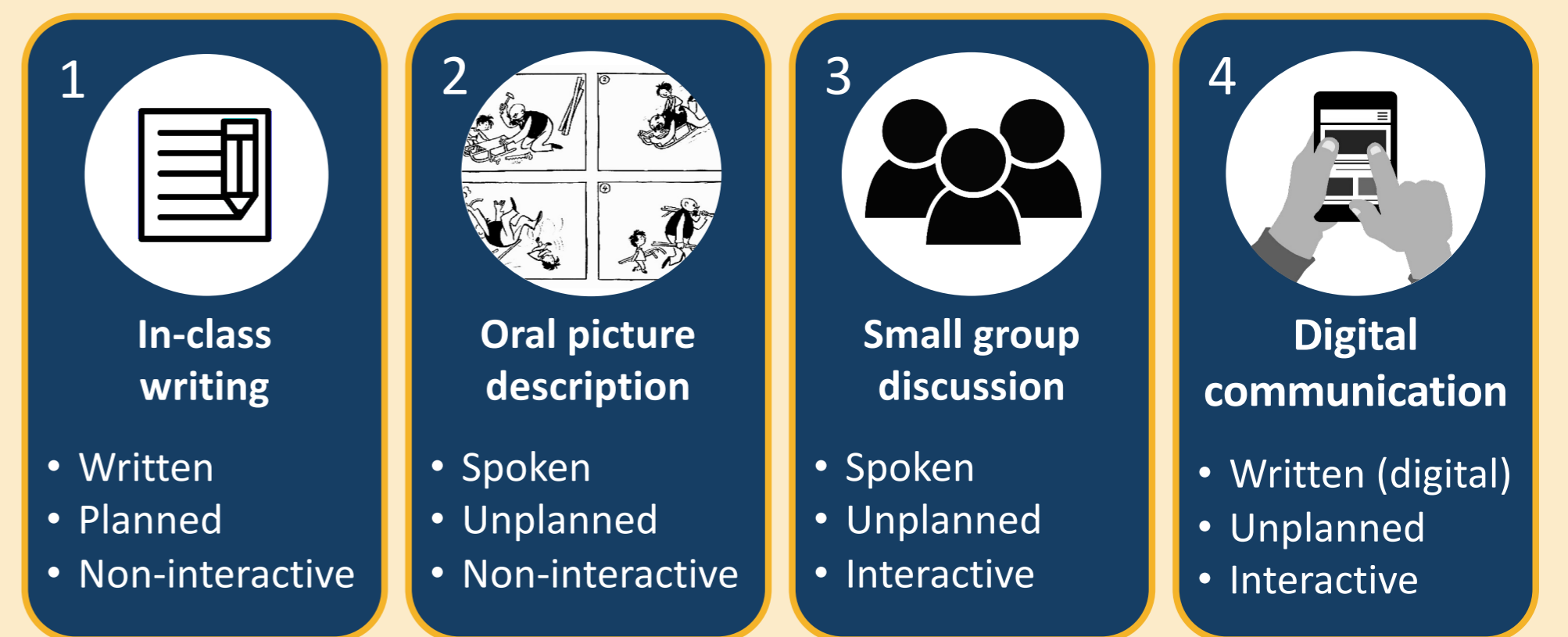
Our Participants and what we Want to Know About Them



Goal: Analyze and describe how young German learners of English use English in production, both spoken and written. We explore:



Task types



PhD Projects on Young German Learner English

- Grammatical variation in young German learner English: Acquisition of probabilistic constraints, investigating the dative and benefactive alternations (*Bethany Stoddard, Bonn*)
- Exploring the connection between informal language exposure and complexity in learner English (*Lisa-Christine Altendorf, Bonn*)
- Acquisition of accuracy in German secondary EFL education and learners' production of English *if-clauses* (*Lea Bracke, Bamberg*)



This research is supported by the German Research Foundation (DFG 515774206).

Counteracting Accent Discrimination Practices in Education (CIRCE)

Goals

- Investigate **how accent discrimination takes place** in schools, and how it impacts students' lives
- Provide** students and teachers with **resources** to foster tolerance towards accent variation
- Raise awareness** about accent discrimination in schools and universities

Approach

Reviewing textbooks
Systematic literature review



Contextualized verbal guise study

Qualitative interviews

Countries

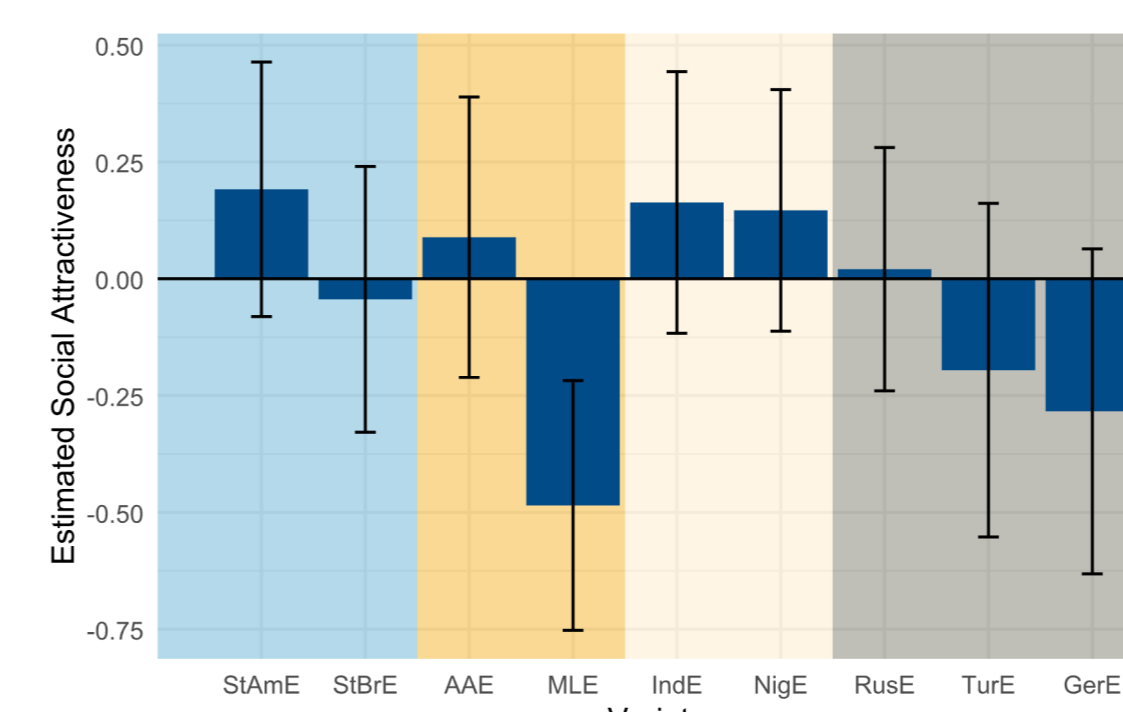
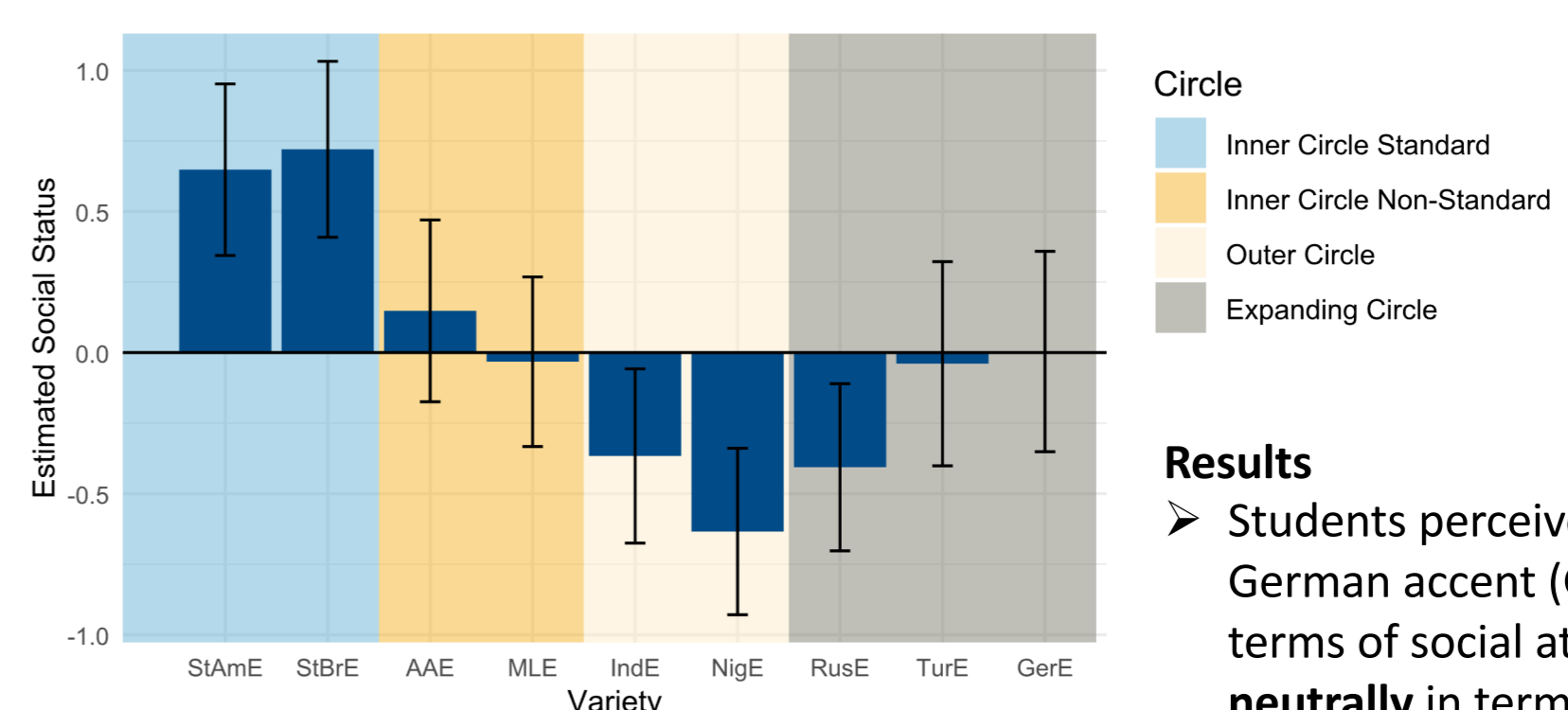


Find more on the project here!



Preliminary Results of the Verbal Guise Study

Aim: Investigate how German high school students evaluate a wide range of English accents
Two dimensions emerged: Social Status (Educated, Competent, Correct, Fluent, Pleasant, Prestigious) and Social Attractiveness (Friendly & not Arrogant)



Results

- Students perceived their own German accent (GerE) **negatively** in terms of social attractiveness, and **neutrally** in terms of social status
- British E.** enjoys high social status but low social attractiveness
- American E.** is overall the most popular accent
- Multicultural London English** is perceived most negatively concerning social attractiveness
- Indian and Nigerian English** do not enjoy high social status but are perceived well concerning social attractiveness

